

[View in browser](#)



[Parents](#)

[Children and young people](#)

[Supporters](#)

Out of Amaze - May 2025



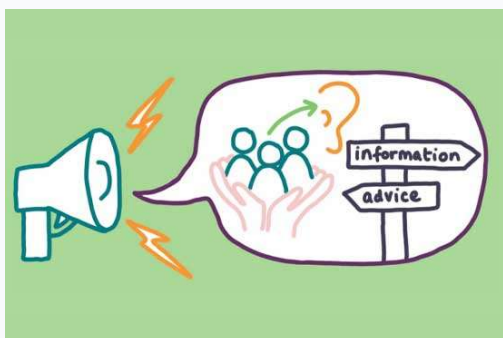
Welcome to our May newsletter

This issue brings you all the latest news from Amaze and more! Use these links to jump to the items you are interested in or scroll down to browse.

- [Amaze strategy 2025 to 2030](#)
- [SEND and Alternative Provision changes in Brighton & Hove](#)
- [NEW!! advice on specific learning difficulties and selective mutism](#)
- [Family Fun Day plus other parent groups news](#)
- [Amazing Futures seeks coordinator](#)
- [NEW!! Amazing Futures Peacehaven group](#)
- [Annual health checks](#) for young people with learning disabilities

- [Supported internships](#)
- [Fundraising challenge events](#)
- [Compass offers](#) including Brighton Fringe and football
- [Upcoming Amaze workshops](#)
- [PaCC round up](#)

Latest news



Amaze launches its strategy to 2030

This week, Amaze launches the strategy that will underpin our work for the next five years. It is the culmination of lots of listening and engaging with families, young people and other stakeholders over the last year and working together to turn that feedback into achievable goals. Sally Polanski, Amaze's CEO, outlines our four key strategic priorities for 2025-30 and unveils our new vision and mission. She also explains some of the context around the strategy and how your views and ideas are at the heart of everything we plan to do.

[Amaze's future plans >](#)

SEND & Alternative Provision changes

Would you like to know how the local authority is working to address the challenges in SEND education? Yvonne Ely at Brighton & Hove City Council explains all the elements of the council's SEND Sufficiency Plan including new specialist places and provision, and Amanda Meier, Lead for the [Change Programme](#), updates us on their work around Ordinary Available Provision and Alternative Provision. Plus, John McKee, Head of Patcham High School, gives the headteacher perspective on ongoing challenges, and the Parent Carers' Council explains how they are working to help shape developments.

[SEND education changes >](#)

NEW! Advice on selective mutism and specific learning difficulties

Our ND (neurodevelopmental) Family Support Service is continuing to build a bank of advice around neurodifferences to support parent carers. Our latest web page resources are on selective mutism and dyslexia, dyscalculia and dysgraphia.



Dyslexia, dyscalculia and dysgraphia

Dyslexia, dyscalculia, and dysgraphia are specific learning difficulties or differences that affect the way people read, write and work with numbers. Coordination, organisation and memory may also be affected. Read our new web page to find out more about each condition, including characteristics, assessments and things that can help your child or young person.

[Dyslexia, dyscalculia & dysgraphia >](#)



Selective or situational mutism

Selective mutism is an anxiety disorder where someone is unable to speak in certain social situations, such as at school or to relatives they do not see very often. Our new web page offers information and signposting for parents of children who may be experiencing selective/situational mutism. The page covers what selective mutism is, how to get a diagnosis, supporting your child or young person, and more.

[Selective mutism >](#)

Parent groups and befriending



Family Fun Day - Weds 27 August!

Thanks to funding from Brighton & Hove Mencap, we are delighted to be running another **FREE family fun day** during the summer holidays. The day will run from **11am to 3pm on Wednesday 27 August at Portslade Village Centre**. There will be wheely fun for the little ones with 'World of Wheels', amazing arts and crafts with 'SCIP', as well as animals, magic and free play. Keep a look out on our social media pages and our events page for when bookings open.

One to one support and groups

Unfortunately, due to overwhelming demand, our one-to-one befriending waiting list is still closed. However, our **WhatsApp groups** continue to be a great way to receive immediate peer support. We moderate several different groups where you can ask questions of other parent carers, get information on events and build friendships with other parents who have similar experiences.

We run **monthly in-person groups** at six different locations in Brighton & Hove. You don't need to book a place, just pop along on the day and you'll be assured of a very warm welcome. We also run termly **online evening groups** and in-person groups for parent carers of children and young people with **complex needs and/or profound learning disabilities**.

See all the groups on our [Events page](#) or email [Parent Groups & Befriending](mailto:parentgroups@amazesussex.org.uk) at parentgroups@amazesussex.org.uk for more information.

Join a group >



Amaze seeks Youth Project Coordinator

We're looking for a coordinator to lead our small but wonderful Brighton youth team, running activities with young people with SEND to have fun, try new things, make friends, express their views and prepare for adulthood.

It's a two year fixed-term contract, 24 hours per week, working out of Amaze's Brighton office and at different venues across the city and into East Sussex. Pay is £18.65-£19.14 per hour, which equates to £33,945-34,834 FTE. Closing date for applications is **Monday 2 June**.

[Apply now >](#)

New Amazing Futures Peacehaven group for young people

Our NEW Peacehaven group for young people with SEND meets every other Wednesday in the Anzac Room at Community House (by the Meridian Centre) in Peacehaven. The next group is on Weds 28 May.

14-25 year olds with SEND can join us to talk about life, play games, create art, and try different activities

Free snacks provided!

[Book Peacehaven group >](#)



Annual health checks

Did you know that young people with a learning disability can get an annual health check at their GP surgery from 14 upwards? The checks are all about building relationships and spotting problems early to improve their health.

If your young person is on the surgery's learning disability register, they should get invited for the health check automatically once they turn 14. But you can contact them to request one if you haven't heard from them. You can also check they are on the learning disability register then.

If your young person is worried about seeing a doctor, tell the GP surgery. The doctor or nurse can make reasonable adjustments to make the appointments work for them.

Read more about [annual health checks](#).



Supported internships

Is your young person keen to get into work? Supported internships can be a great bridge between education and employment for young people with additional needs. Find out more about local providers and how internships work.

About supported internships >



Take on a challenge for Amaze!

We're looking for daredevils and thrillseekers to take on some of our exciting events this year to raise money for Amaze.

Whether you're doing it alone or with friends and family, you can have a huge impact on families in Sussex by supporting Amaze this year.

Events already in the calendar include a Peacehaven abseil in June, Yr Wyddfa at Night in August, and Inflatable Run Brighton in October.

[Sign up for a challenge >](#)



Fringe, football and other fun stuff

What are the latest offers for Compass Cardholders?

With the warmer weather on the way, now is the time to dust off your Compass Card and start taking advantage of the fantastic offers available with your card. Our [Brighton Fringe offer](#) is back for 2025 and, once again, cardholders get a concessionary rate and one free carer's ticket. If football is more your thing, we have a great [new football offer with Able Kicks](#), who run pan-disability football sessions in Ford. Card holders get a discount on pay as you go sessions. Click on the green button below to see all our offers.

We post new offers, special events, freebies and family days on the Amaze [SEND Noticeboard](#) on Facebook. You'll also find information about services, events and activities across Brighton & Hove and the surrounding areas. It's a great way to stay up to date with all things SEND.

Compass Card offers >

Upcoming workshops



Getting support for my child's SEN in school

A free Zoom workshop for parents who are worried about the progress their child is making at school (where the child doesn't have an EHC plan).

Our next workshop takes place on **Weds 11 June** from **10.30am to 12pm**.

SEN support
workshop:
Book now >



How to claim PIP

This free evening workshop led by Lizzie Batten will help you identify whether your child is likely to get Personal Independence Payment (PIP) and help you make a strong claim.

Our next Zoom workshop takes place on **Weds 25 June** from **7pm to 9pm**.

PIP workshop:
Book now >



Making the most of Annual Reviews of your child's EHCP

This free SENDIASS Zoom workshop helps you prepare for the next annual review of your child's Education, Health and Care (EHC) plan.

The session takes place on **Tues 1 July** from **10.30am to 12pm**.

Annual Review
workshop:
Book now >

Book any of our workshops via the [Events](#) page of our website. You can also find recordings of some of our workshops on our [YouTube channel](#).

Legal clinics on medical negligence and education

Amaze partner [Slater and Gordon](#) is hosting **free online legal sessions** for families on 10 and 13 June, in collaboration with our Parent Groups and Befriending service. The sessions will give you a chance to ask questions from a **medical negligence** or **education specialist** lawyer. [Email Slater and Gordon to book your free legal session.](#)



[Free legal clinics >](#)



PaCC_round up

This PaCC update brings together the latest news on our work on different SEND services in Brighton & Hove, including:

- Autism in Schools (AIS) and Partnerships for Inclusion of Neurodiversity in Schools (PINS)
- Courageous Conversations – Brighton and Hove event on the rising number of statutory assessments
- Short Breaks update

- Learning Disability Partnership Board latest
- SEND and Alternative Provision (AP) and SEND Sufficiency plans

We share how PaCC is working to ensure that parent carer voices are influencing decisions at every level, and tell you about the PaCConnect on Education coming soon on 3rd June.

[Read PaCC's round up >](#)

Did you know you can raise money for Amaze for free while you shop?

We're signed up to easyfundraising, which means **you can raise FREE donations for us every time you shop online**. Over 7,000 brands will donate to us when you use easyfundraising to shop with them – at no extra cost to yourself! These donations really mount up and **make a BIG difference to us**, so we'd really appreciate it if you could take a moment to sign up and support us. It's **completely FREE and only takes a moment**.

[Join easyfundraising >](#)

Enjoyed this newsletter?

If the newsletter has been a good read, and you can afford to give back, please [make a donation](#) and 'pay it forward' so we can help another family. Thank you.

Amaze
Community Base
113 Queens Road
Brighton BN1 3XG
info@amazesussex.org.uk
amazesussex.org.uk



This is the Brighton & Hove version of our newsletter. If you would prefer to receive the East Sussex version, please email Email comms at comms@amazesussex.org.uk