

Find out about the Learning Disability Register for your child



If your child has a learning disability, it's important they get the right help and support so they can live their best life.



If your child is on the Learning Disability Register, they will be able to get extra health support from their Doctor (GP Practice).



This includes an Annual Health Check for people 14 years old and older.



This information is to help you have a talk with your Doctor (GP) about if your child should be on the Learning Disability Register.

What is the Learning Disability Register?



The Learning Disability Register is a list that each Doctor (GP Practice) has of their own patients who have a learning disability.



The Register is so staff know who has a learning disability so they can make sure they are supported in a way that works for them.

When you make a change to meet a person's needs, this is called a reasonable adjustment.

Some examples of reasonable adjustments are:



- giving people a longer appointment



- Having a quiet waiting room



- Giving people information in easy read, plain English or large print



- Let people bring their carers with them to appointments



- Having a choice of a face to face or virtual appointment

What are the benefits of being on the Learning Disability Register?



If you are on the Learning Disability Register, you will be able to get:

- An Annual Health Check from 14 years and older





- A Health Action Plan



- Flu vaccines



- NHS COVID vaccines

Carers register



If you are their main carer, you should also be registered as a carer by your Doctor (GP). This will mean you can



- Talk to staff for the person you care for



- You may also be able to get to a free NHS carer's health check



- You will also be able to get Flu and COVID vaccines

What is a learning disability?



There are three things which help the Doctor (GP) decide if someone has a learning disability.



These could be:

- If your child is less able to understand new information and to learn new skills



- They are less able to be independent than those without a learning disability



- This started before the age of 18 years old

What should I do if I think my child has a learning disability?



If you think your child may have a learning disability, you can book an appointment to talk to your Doctor (GP).



You can take this leaflet and show it to your Doctor (GP).

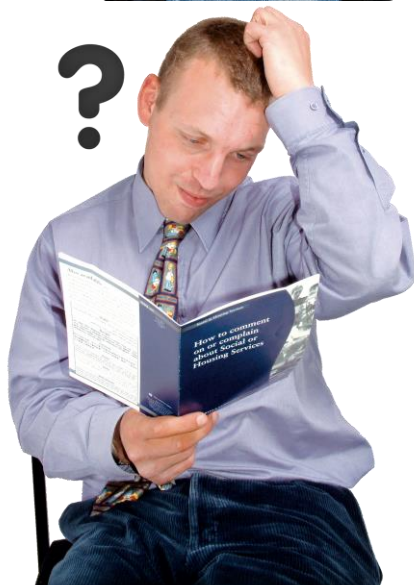
What is the difference from a learning disability and a learning difficulty?



A person with a learning difficulty struggles in usually one area of learning.



For example, they can have Dyslexia or other conditions and may struggle with reading or writing, spelling or maths.



Dyslexia, for example, is a general disability and is not a learning disability.



If your child is Autistic but does not have a learning disability, they are not able to have an Annual Health Check, but this might change in the future.

Questions to help you think if your child could have a learning disability



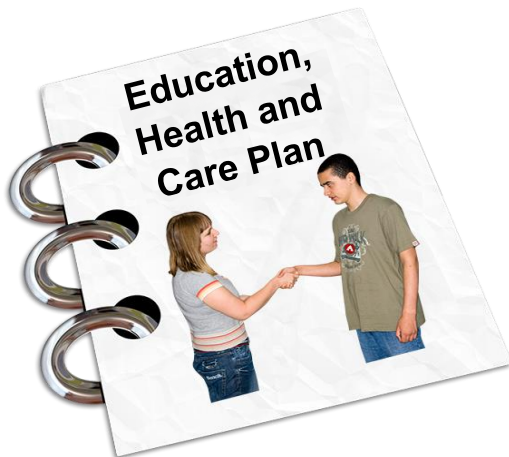
If you answer yes to some of the questions below, it's really important you contact your Doctor (GP) practice and ask them if your child could or should be on their Doctor's (GP's) Learning Disability Register. This can be done at any age.



- Is your child on the Special Educational Needs and Disabilities (SEND) Support Register?



- Does your child attend a special school?



- Does your child have an Education, Health and Care Plan (EHCP)?



- Do you have any reports about your child which say that your child has a learning disability, intellectual disability or global development delay



- Is your child entitled to Personal Independence Payment. This used to be called Disability Living Allowance



If you have any letters or documents which say your child has a learning disability, intellectual disability, or global development delay, bring some of these with you.



If your Doctor (GP) can't decide, your Doctor (GP) may want to ask for help from another health professional.



If they agree that your child would benefit from being added to their Doctor (GP) practice's Learning Disability Register, you can be noted as their carer.

Where can I get more information?



If you have any questions about services available for your child, you can contact:



- Your local council



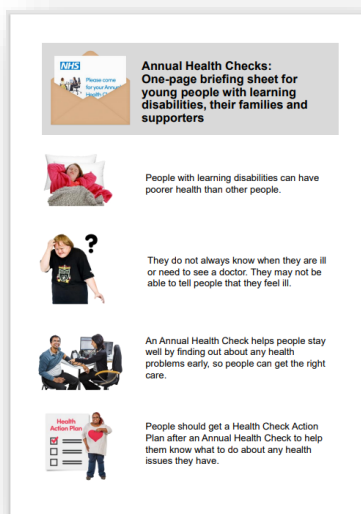
- Your nursery, school, college, Special Educational Needs or Disabilities co-ordinator



- Your Social Worker or local carers group may also be able to help



Click the link for a Mencap document about getting on the GP Learning Disability Register <https://www.mencap.org.uk/sites/default/files/2022-02/Doc%20%20learning%20disability%20register.pdf>



This document is to give more information about annual health checks for young people with a learning disability and their families and carers

[https://www.ndti.org.uk/assets/files/Health Checks Easy-read Young people.pdf](https://www.ndti.org.uk/assets/files/Health%20Checks%20Easy-read%20Young%20people.pdf)

contact
For families
with disabled children

You can get in touch with 'Contact' who are a charity for families of people who have a disability.



Call them: 0808 808 3555



Visit their website on:
<https://contact.org.uk/help-for-families/information-advice-services/our-helpline/>