

[View in browser](#)

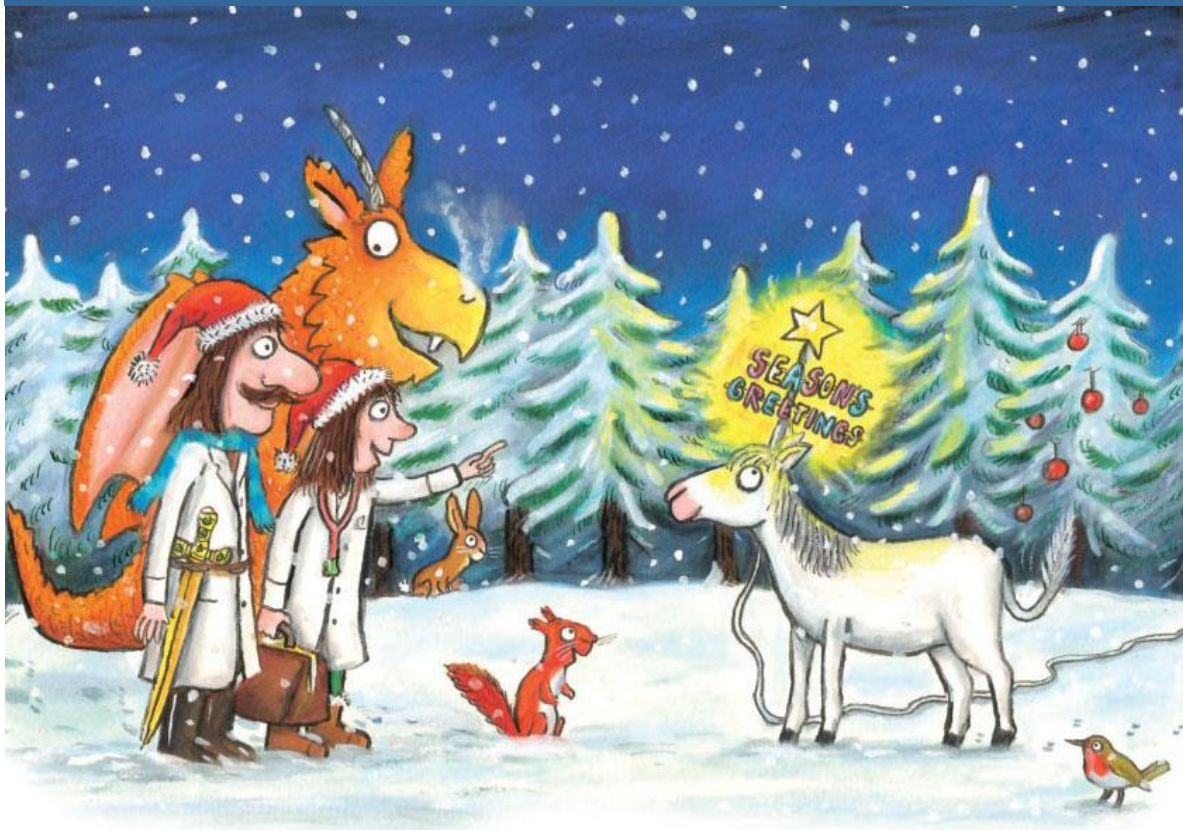


[PARENTS](#)

[CHILDREN & YOUNG PEOPLE](#)

[SUPPORTERS](#)

## Out of Amaze - December 2020



Welcome to our December newsletter. It's been a long, tough, year but I hope you can find some energy to celebrate the approaching festive season, and share some precious time with a few supportive friends or family if you feel that is safe for you. This month's newsletter includes some really useful articles including a round up of the biggest '**Covid Challenges**' facing our families right now, a SENDIASS guide to '**Understanding Home Education**', and the latest from your local **parent carer forum**. We also have a short **strategy survey** that we'd love you to complete to help us decide on our work priorities for the next three years and you might win a £50 voucher. Finally, you can share our fabulous **festive e-card** with friends and family and help raise funds for Amaze. [Read our December round-up here.](#)

*Rachel Travers, Amaze CEO*



### Share our e-card for Amaze

Our beautiful Xmas card comes courtesy of Amaze patron and author Julia Donaldson and illustrator Axel Scheffler. You can **personalise and send the e-card** to family and friends via the link below. And if you'd like to donate any monies saved on postage, stamps etc to Amaze, we'd be very grateful.

[Send our easy e-card >](#)



### Tell us what you want from us

Amaze is busily preparing its next three-year strategic plan. We need you to help shape our priorities by taking part in a **short survey** to tell us what you need. It should only take 10 minutes and you might **win a £50 Love2Shop gift voucher**. The closing date for the survey is 18 December.

[Complete our survey >](#)

## Amaze advice zone



### SENDIASS Guide: Understanding home education

With more families than ever home educating, out of choice or necessity, our SENDIASS team has put together a guide that sets out the rights and rules around home education, and where to get information and support. You can also sign up for a 'Home education' Zoom workshop on 10 February 2021.

[More about home education >](#)



### Online Covid-19 guidance

Since the start of the pandemic, Amaze has been working really hard to keep you informed about all the latest **Coronavirus guidance** and support for children and young people with SEND. The Sussex-specific advice covers education, health, social care, money, young people and more, and it's being updated all the time.

[Covid-19 & SEND advice >](#)



### Looking after you this Xmas

Christmas is traditionally a time for... running round like a headless chicken trying to service everyone's needs but your own! This year, more than ever, we could really benefit from carving out a tiny bit of time and space for ourselves. Read our **self care guide** for some simple ideas to make that a reality.

[Get our tips >](#)

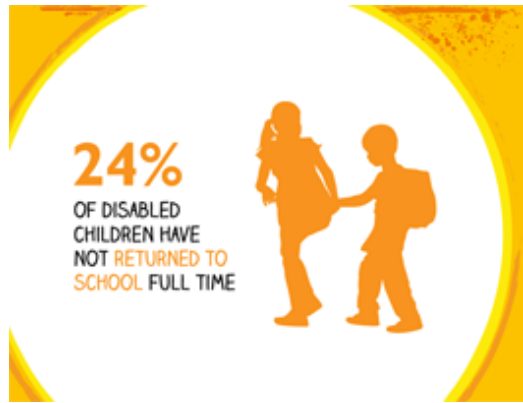


## SEND news



### Ongoing challenges of Covid

Amaze SENDIASS staff and your local parent carer forums have been working together to record and collate all your most pressing issues and concerns around Covid-19 and the ongoing challenges it poses for our families. Read our [summary of ongoing Covid-19 challenges](#) that we are raising with local SEND leaders and commissioners.



### DCP survey shows children still #leftinlockdown

As part of the Disabled Children's Partnership, Amaze recently asked you to take part in a 'Back to school' poll. The results of the poll were published this week and, though they found that the return to school has gone well for many disabled children, many others were still without the right support or left in lockdown. [Read about the DCP's poll and campaign.](#)



### Join CITES' new parent involvement group

Get involved in shaping the East Sussex Children's Integrated Therapy and Equipment Service by joining their new parent involvement group.

CITES says: "Involving you in how our services are delivered will make sure they are the best they can possibly be so, we really want you as part of our team. Please contact [kentchft.engagement@nhs.net](mailto:kentchft.engagement@nhs.net) or 01233 667810 or visit the [CITES web page](#) for more information.

## Free SENDIASS Zoom workshops



### iPad workshop with the Family Fund

Do you have an iPad and want to learn how to make the most of it? Family Fund are running this Zoom workshop with PaCC and SENDIASS for families with children with additional needs. **Weds 13 January 2021** from 10am to 12pm.

[Book >](#)



### Preparing for adulthood workshop

This SENDIASS Zoom workshop is for **parent carers of young people in Year 9 onwards** to help you know more about the key areas of preparing for their future. The session is on **Weds 20 January 2021** from 10am to 12pm.

[Book >](#)



### Getting the most out of EHCP Annual Reviews

A SENDIASS Zoom workshop to help you understand more about the **annual review** process and get practical tips on how to get the best from your child's **EHC plan**. **Tues 2 February 2021** from 10am to 12pm.

[Book >](#)

For a full list of our SENDIASS Zoom workshops, visit our [Amaze Events page](#)



## Latest from the East Sussex Parent Carer Forum

It's **ESPCF's** first birthday and the forum is busier than ever. Find out more in the November newsletter, which includes details about a new series of info postcards, a parent carer focus group on Emotionally Based School Avoidance, a diary snapshot, and more.

[Read ESPCF's latest newsletter >](#)

**Confused by Amaze, SENDIASS, PaCC, ESPCF?** Have you ever wondered what's the difference between Amaze, SENDIASS and the parent carer forums and just how they work together? If so, you can read this handy [guide to the roles, responsibilities and ways of working between PaCC, ESPCF, SENDIASS and Amaze \[.docx 121kb\]](#)

## Young people



### Zoe's story: planning for your future in a pandemic

Zoe reached out to us earlier this year for some support with her next steps. Read about how our **Looking Forward** project helped her move closer to her dream of being a teaching assistant.

[Read more >](#)

### Amazing Futures Peer Support Groups

Our Amazing Futures [peer support activity groups](#) for young people with SEND continue to meet in small, socially distanced sessions with loads of fun activities, in both Eastbourne and Bexhill. Plus our **Amazingly Active** exercise programme begins in the new year! Get in touch if you're interested in joining a group – we can't guarantee a space will be available right away, but we'll fit you in as soon as we can.

[Contact Amazing Futures >](#)



### Amaze thanks Waitrose

Special thanks to Waitrose especially the Eastbourne, Hove and Lewes stores who have supported Amaze through their 'Community Matters' scheme.



### A big impact

Are you interested in Amaze's work? Would you like to find out more about the impact we make on the lives of children and young people with SEND and their families? [Read our 2019-20 Impact Report](#)

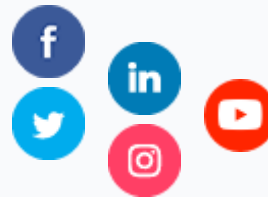




## Use Amazon Smile and help raise funds for Amaze

If you're shopping on Amazon this Christmas, then why not sign up for [Amazon Smile](#) and choose Amaze as your charity? It takes moments to set up, it won't cost you a penny and we get a percentage of eligible sales. You can see exactly how to do it in our image here.

Amaze  
Community Base  
113 Queens Road  
Brighton  
BN1 3XG  
[info@amazesussex.org.uk](mailto:info@amazesussex.org.uk)  
[amazesussex.org.uk](http://amazesussex.org.uk)



This is the East Sussex version of our newsletter. If you would prefer to receive the Brighton & Hove version, please email [charlotte@amazesussex.org.uk](mailto:charlotte@amazesussex.org.uk)

This email was sent to {{ contact.EMAIL }}  
You received this email because you are registered to get information or services from Amaze.

[Unsubscribe here](#)

Sent by

 sendinblue

© 2020 Amaze